



OLYMPIC VALLEY PUBLIC SERVICE DISTRICT BOARD REPORT



SUBJECT: United States Forest Service (USFS)/National Forest Foundation (NFF) Fuels Project Updates

EXHIBIT: F-2, 10 Pages

AUTHOR: Jessica Asher, Program Manager

MEETING DATE: June 30, 2026

RECOMMENDED ACTION: This report is informational only, no action is requested from the Board.

DISCUSSION: The District's Fuel Reduction Projects complement efforts by other entities to create a larger, more continuous area of hazardous fuel reduction across public and private lands. Together, these projects will improve forest resilience, enhance firefighter access, and strengthen wildfire protection for Olympic Valley, North Lake Tahoe, and Truckee communities.

The National Forest Foundation (NFF), in partnership with the U.S. Forest Service (USFS) and the Middle Truckee River Watershed Forest Partnership, is implementing two projects close to Olympic Valley.

Adjacent to the District's *OV-5 South Ridge Project*, the NFF is implementing the *Alpine Meadows and Olympic Valley Fire Protection Project*. The project will treat up to 684.5 acres of hazardous fuels to improve community wildfire protection and enhance safety along a critical emergency access corridor serving the communities of Alpine Meadows and Olympic Valley. Planned treatments include mastication, mechanical cutting and piling, hand thinning and chipping, and hand thinning and piling. The project is anticipated to begin on July 1, 2026, with completion required by December 15, 2027.

North of the District's *OV-1 North Ridge Project*, the NFF is implementing the *Five Creeks Project*, a 6,212-acre forest restoration effort being completed in phases. The first phase, Cabin Creek, encompasses 1,951 acres and began in 2024. The second phase, Big Chief, covers 674 acres and is underway as of Spring 2026, with both phases expected to be completed by winter 2027. Both phases were funded by the California Wildlife Conservation Board. As additional funding becomes available, implementation of the project will continue southward from Truckee toward Olympic Valley.

Staff will continue to coordinate closely with the National Forest Foundation and the U.S. Forest Service to maximize the effectiveness of these forest health and fuel reduction efforts. The District will also remain actively engaged in tracking project progress and providing timely updates to keep the community informed as implementation advances.

FISCAL/RESOURCE IMPACTS: None.

STRATEGIC PLAN ALIGNMENT:

Focus Area: Stewardship | **Goal:** Grow Investment in Wildfire Prevention and Resilience

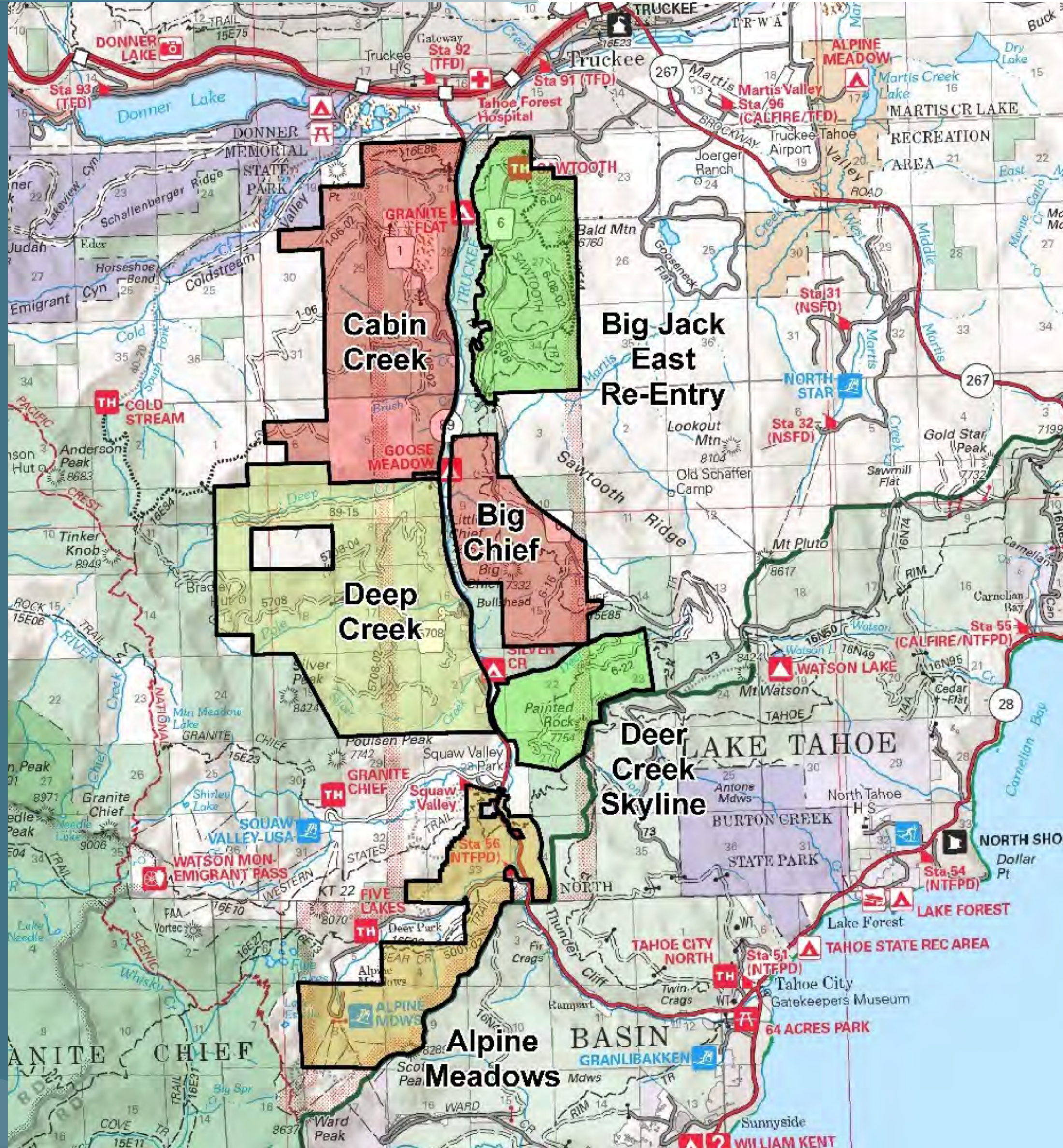
ATTACHMENTS: Informational Slideshow

DATE PREPARED: June 22, 2026



The National Forest Foundation Highway 89 Corridor Project Updates

Anne Graham, Central Sierra Program Coordinator

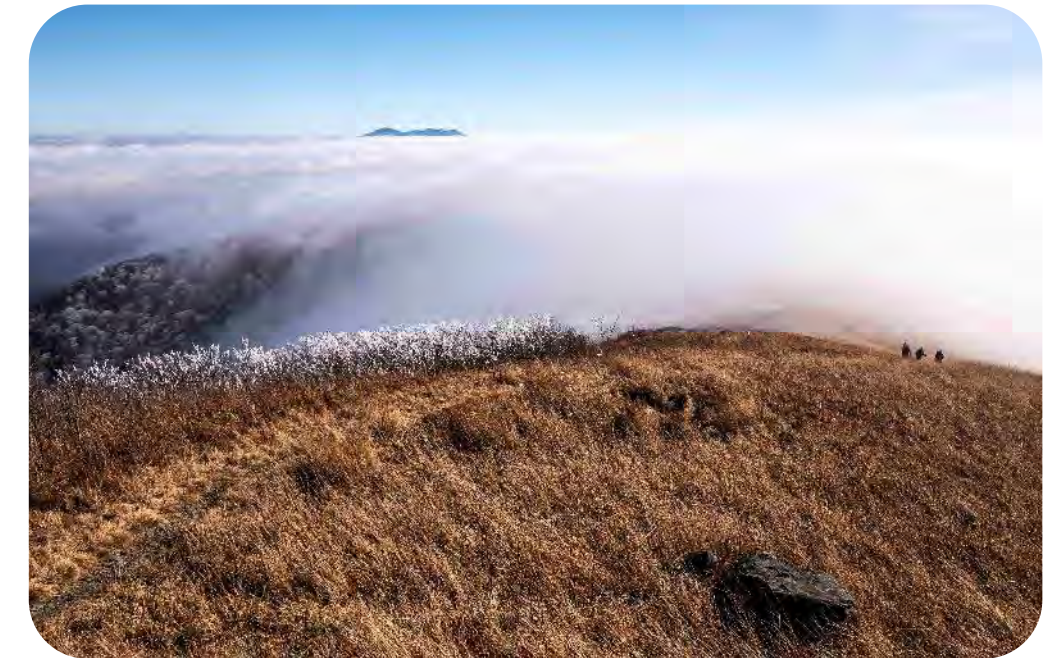


TNF/NFF Work in the Highway 89 Corridor:

- Cabin Creek Implementation: 2024-2026
- Big Chief Implementation: 2026-2027
- Alpine Meadows Implementation: 2026-2027
- Deep Creek Implementation: Shovel ready, need implementation funding
- Big Jack East Re-Entry and Deer Creek Skyline: Out-year projects

AMOV Project Details

- 684.5 acres fuels reduction work
- Combination of machine/mechanical and manual work
- Implementation late July 2026 through end of 2027



-Traffic Control Plan Necessary for Operation On or Adjacent to Existing Transportation System Roads or Trails
 -Remote Automated Weather Station: T.N.F. Eastside Group For Daily PAL Information Call 530-478-6176 (TNF)
 -Cleaning of Equipment Required Before Entering Sale Area
 -Contour Interval - 80 Feet
 -Landlines are approximate.

USDA - Data Source: Tahoe National Forest Geospatial Corporate Database
 - Projection: UTM Zone 10, Datum NAD83, Spheroid GRS_1980
 - The USDA Forest Service, Tahoe N.F. uses the most current and complete data available. GIS data and product accuracy may vary. The lines and areas represented on this map are only approximate and their actual location on the ground may vary. Using GIS products for purposes other than those for which they were created may yield inaccurate results.
 - Map produced by TNF GIS staff, Date: 3/23/2026
 Drafted by Dwight Clark

USDA - FOREST SERVICE
 TAHOE NATIONAL FOREST
 TRUCKEE RANGER DISTRICT
**Alpine Meadows & Olympic Valley
 Fuels Reduction
 Agreement Map**

Scale: 1:11,000

Legend

- Contract Area
- Other Ownership

Units

- Hand Thin & Chip
- Mastication
- Mastication; Hand Thin & Chip
- Mastication; Hand Thin & Chip or Pile
- Mastication; Hand Thin & Pile
- Mastication; Machine Cut & Pile

- Protect Improvements, Land Survey Monument (Location Approximate)
- Protect Improvements, Trail
- Protect Improvements, Powerline
- Site Specific Special Protection Measures, Botany
- LOP1 NOGO (02/15 - 09/15)
- LOP2 Quiet Hours 1900-0600
- Noxious Weeds
- Temporary Crossings

Roads

- Forest Service
- County
- Private
- Highway 89

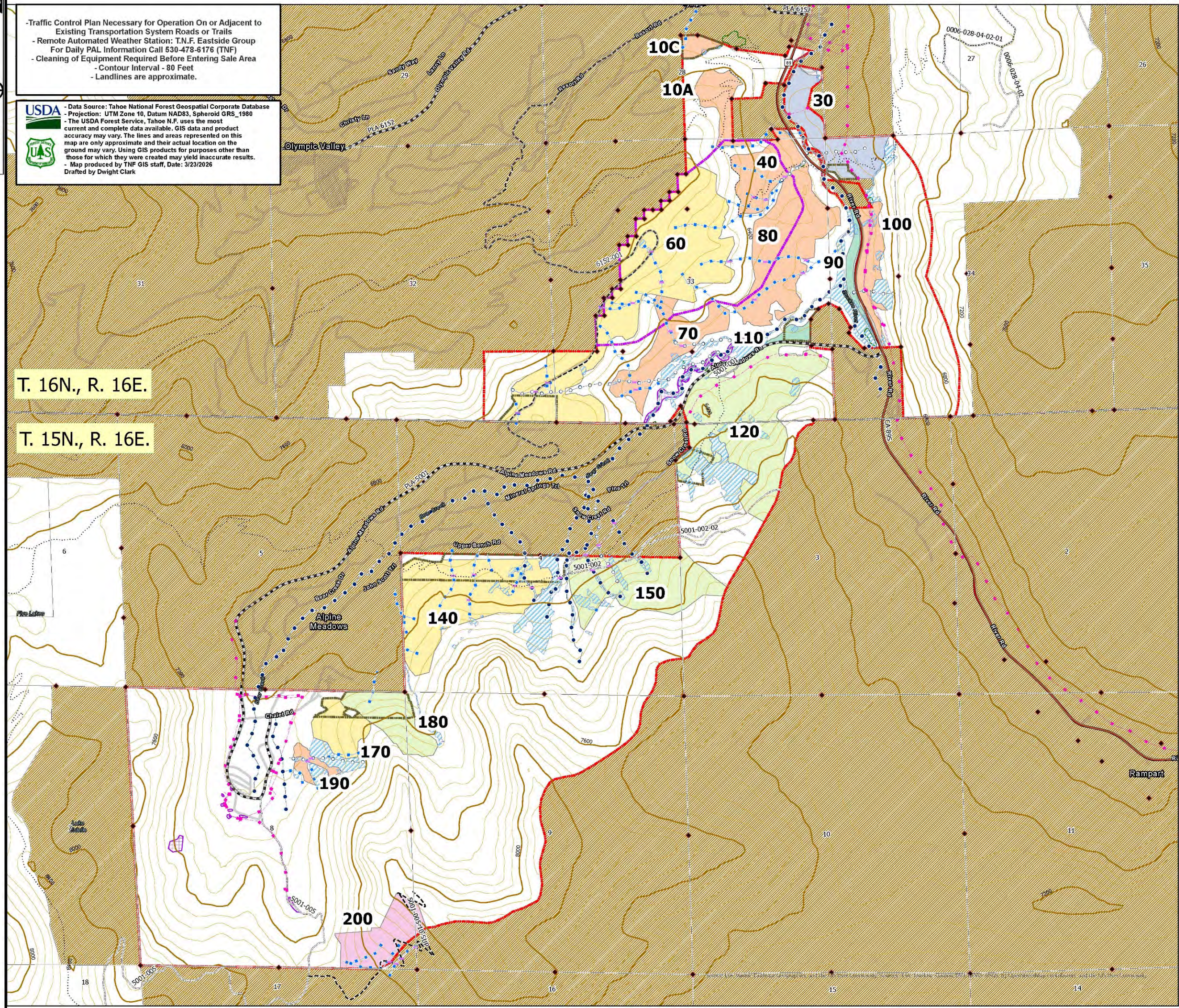
Streamcourse

- Ephemeral
- Intermittent
- Perennial
- Other Riparian Features

Stream Type	Riparian Conservation Area (RCA) Widths	Equipment Exclusion Zones
Perennial Stream	300' each side, measured from riparian vegetation	75' for slope <30%; 100' for slope 30-50%; Top of slope for streams below 70% slope
Intermittent & Ephemeral Stream	150' each side, measured from riparian vegetation	25'
Other Riparian Features (Meadows, Springs, etc.)	300' each side, measured from riparian vegetation	25'

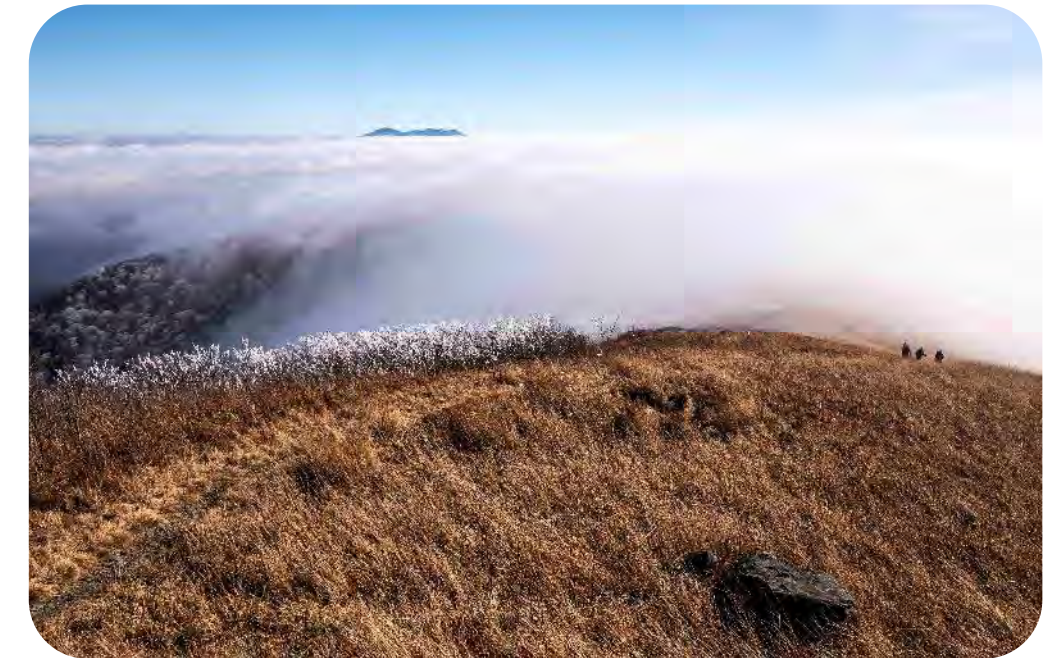
T. 16N., R. 16E.

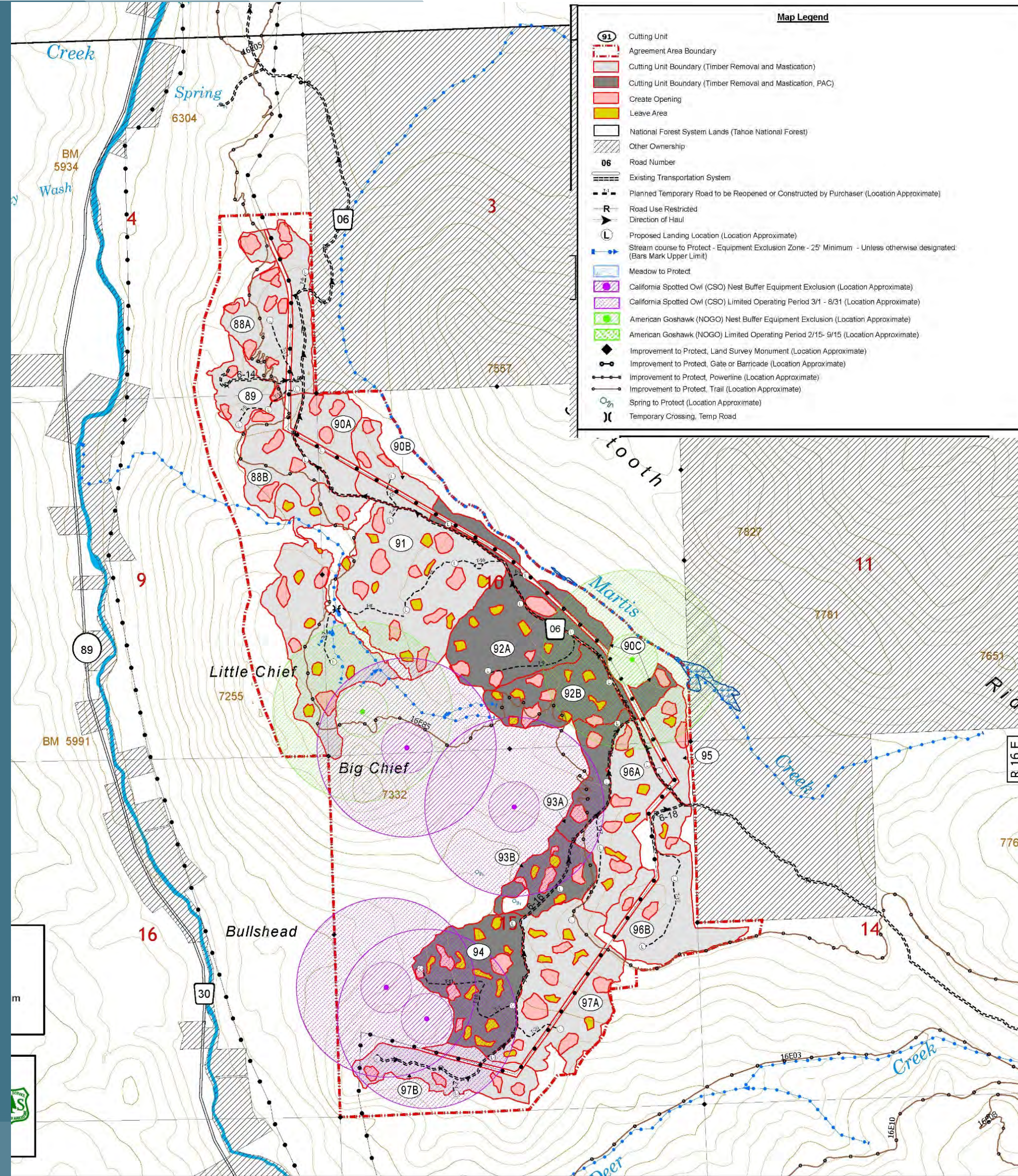
T. 15N., R. 16E.



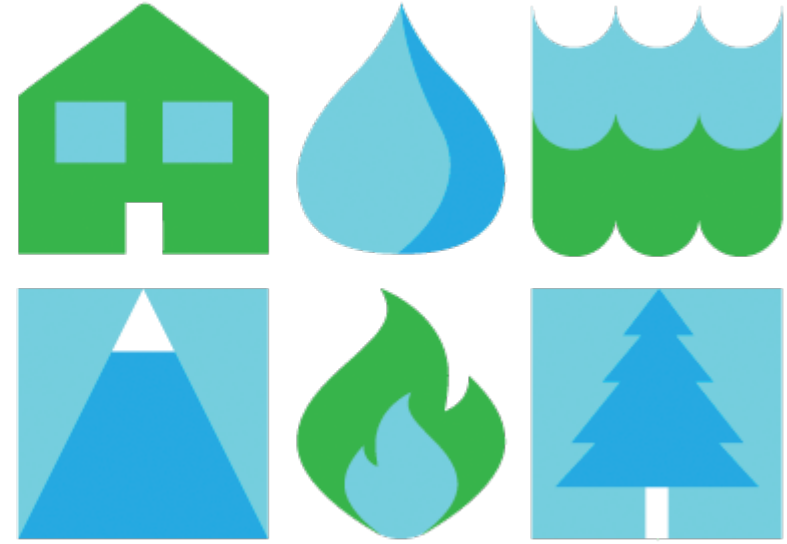
Big Chief Project Details

- 674 acres timber removal and fuels reduction work
- Combination of commercial timber removal, mastication, and manual thinning work
- Implementation May 2026 through end of 2027

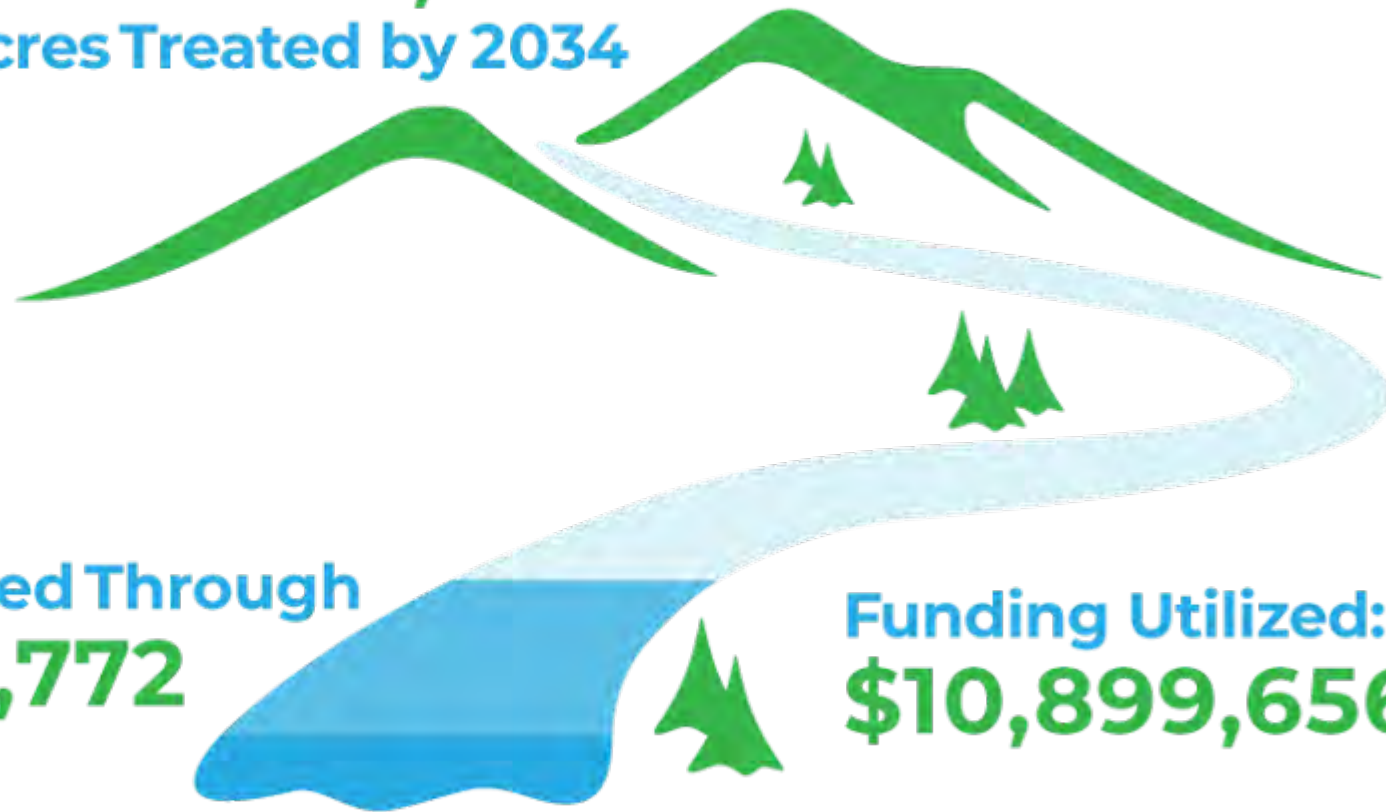




MTRW FOREST PARTNERSHIP



GOAL: 60,000
Acres Treated by 2034



Acres Treated Through
2025: 11,772

Funding Utilized:
\$10,899,656

<https://www.truckeeforests.org/>





Thank You

Contact:

Anne Graham

Central Sierra Program
Coordinator

agraham@nationalforests.org

530.201.8560

nationalforests.org